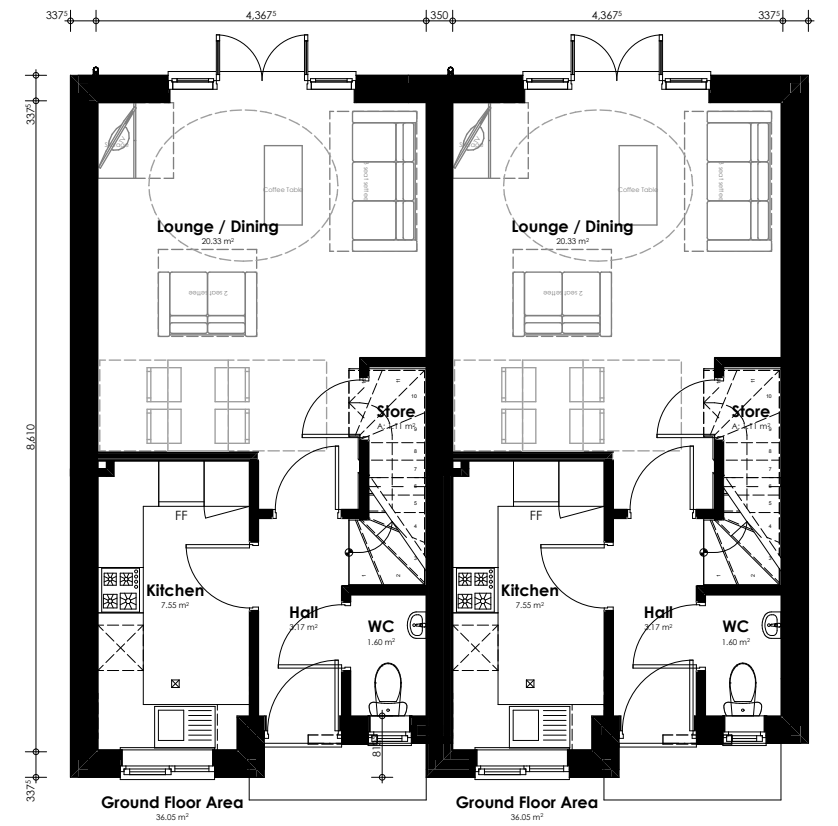
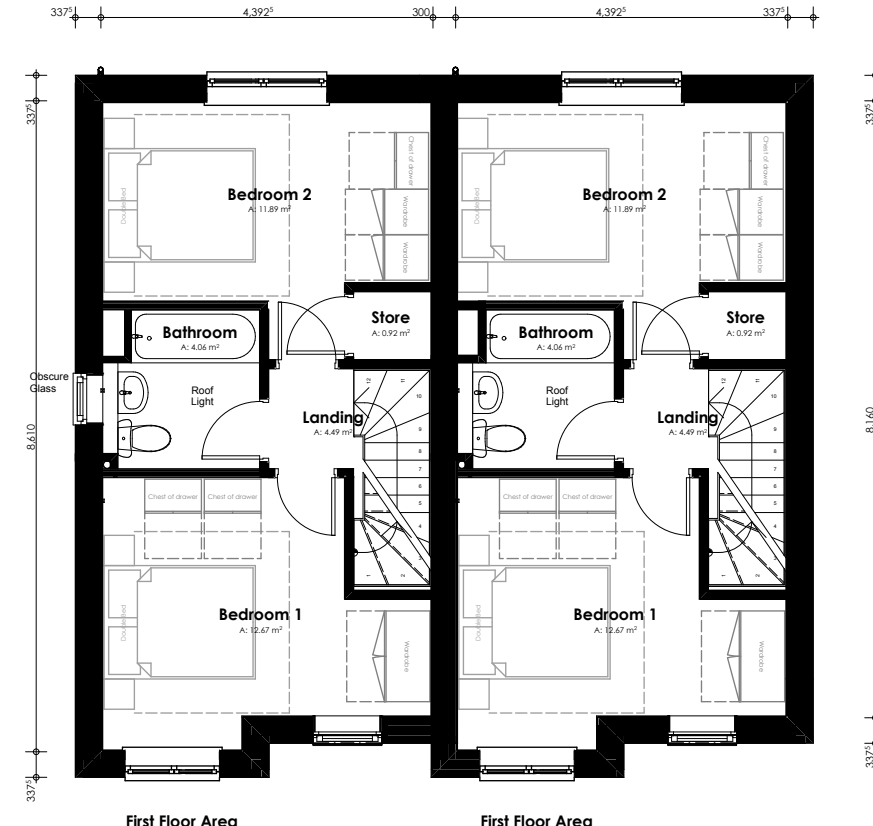


DRAFT PROPOSALS



284P HOUSE TYPE (CAT 1)
G.I.A. 72.1m²

2 BED 4 PERSON HOUSE TYPE A

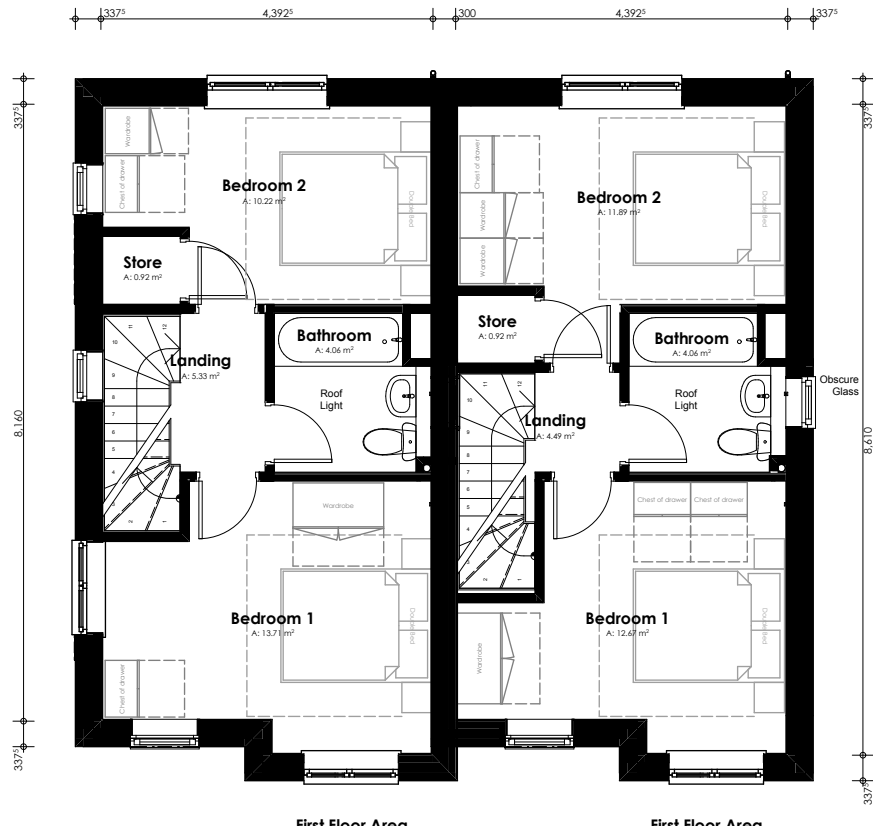


284P HOUSE TYPE (CAT 1)
G.I.A. 72.1m²

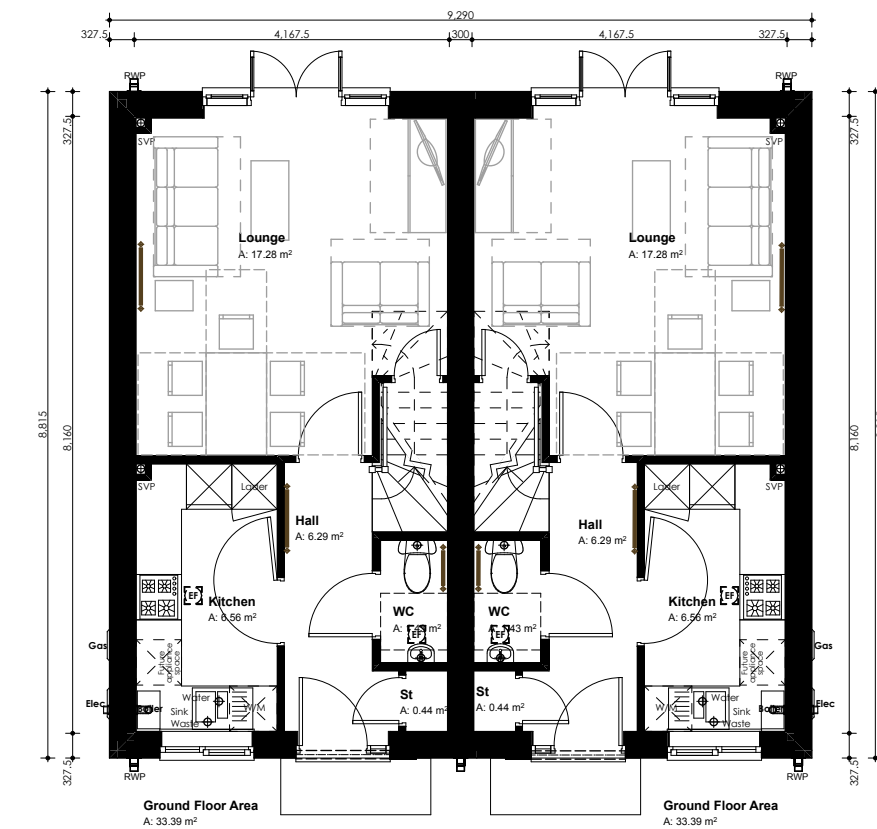


284P HOUSE TYPE B (CAT 1)
G.I.A. 72.3m²

2 BED 4 PERSON HOUSE TYPES A & B

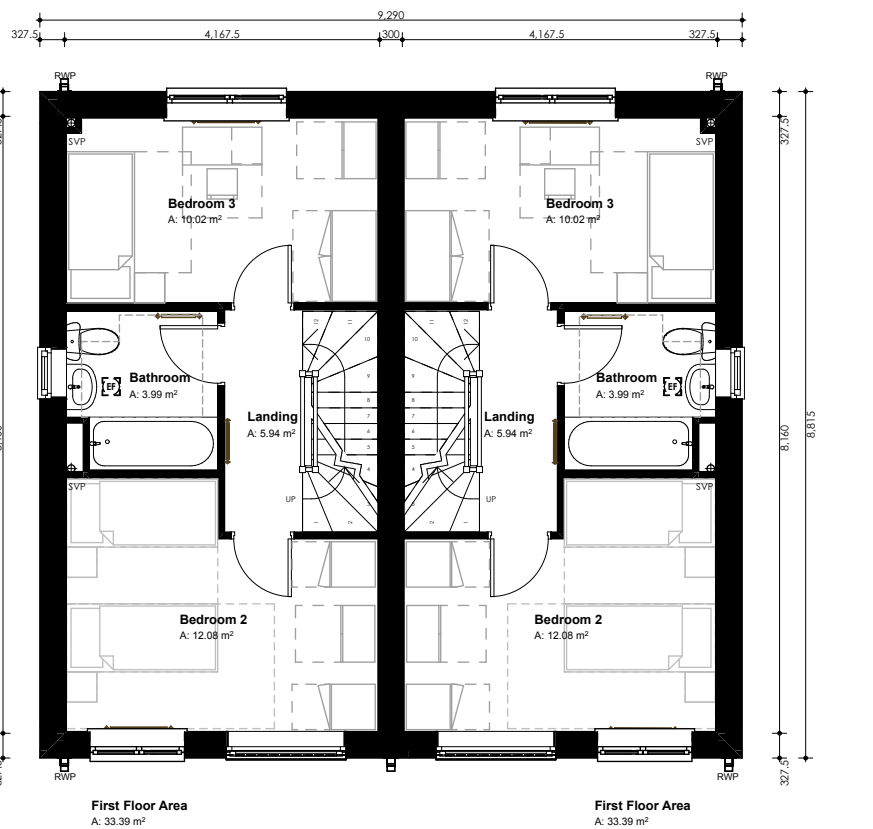


284P HOUSE TYPE A (CAT 1)
G.I.A. 72.1m²

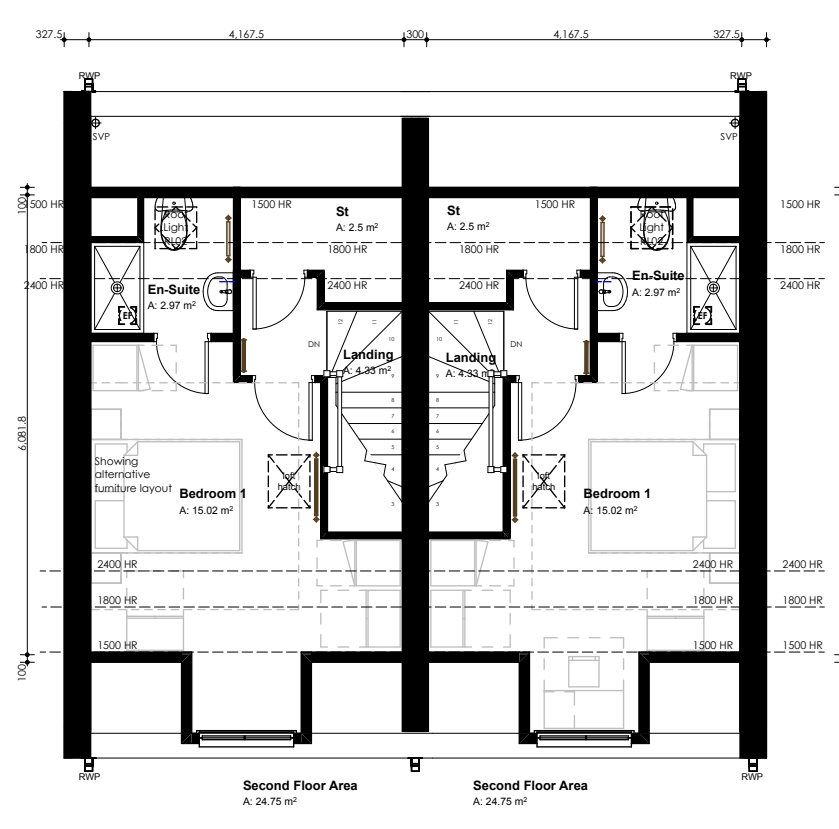


385P HOUSE TYPE G.I.A. 91.53m²

3 BED 5 PERSON HOUSE TYPE

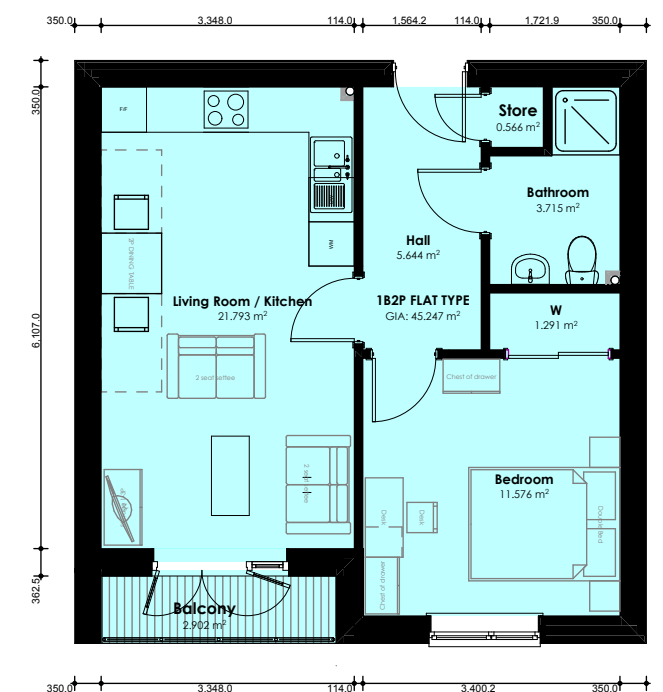


385P HOUSE TYPE G.I.A. 91.53m²



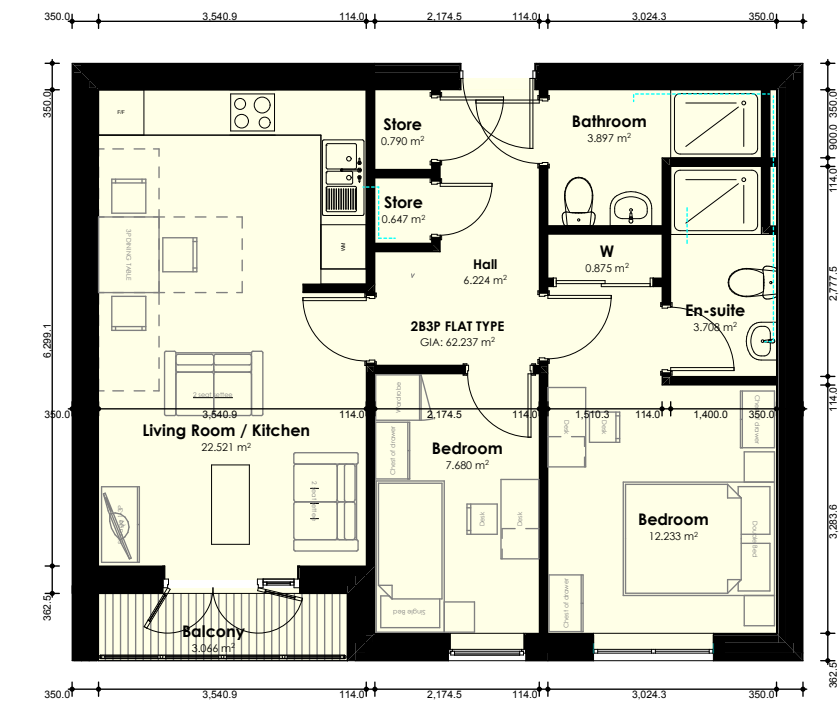
385P HOUSE TYPE G.I.A. 91.53m²

385P HOUSE TYPE G.I.A. 91.53m²



182P FLAT TYPE 45.25 sqm

1 BED 2 PERSON FLAT



283P FLAT TYPE 62.24 sqm

2 BED 3 PERSON FLAT



284P FLAT TYPE 70.93 sqm

2 BED 4 PERSON FLAT

Land Off Hallam Street & Lewisham Street, West Bromwich (Former Sandwell Hospital)
Catalyst Mutual Enterprise CIC, Sandwell And West Birmingham Hospitals NHS Trust & Engie